



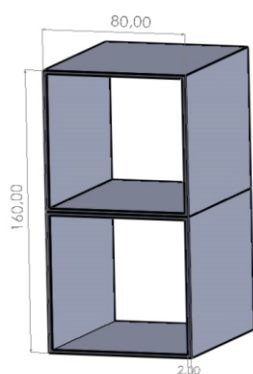
Snow Load
82
kg /m²

Wind Resistant
30
m/s

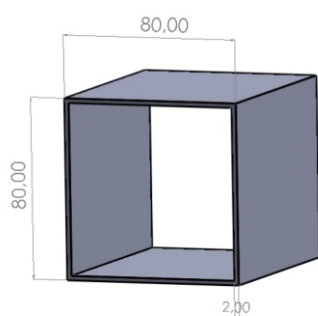


Technical Specifications;

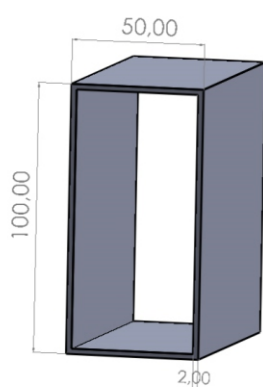
- * 10 mm 4 wall PC roof sheet , %100 UV protection.
- * Anodized aluminium and steel structure.
- * Integrated rain gutter .
- * Maintenance-free for many years.
- * TF Line carport is suitable for car and other vehicles ,
And is suitable for SOLAR PANEL CARPORT .



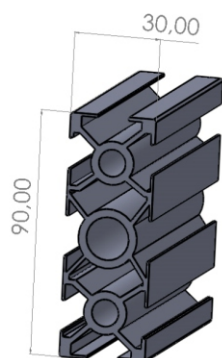
Post Profile Stelle
160 x 80x 2 mm



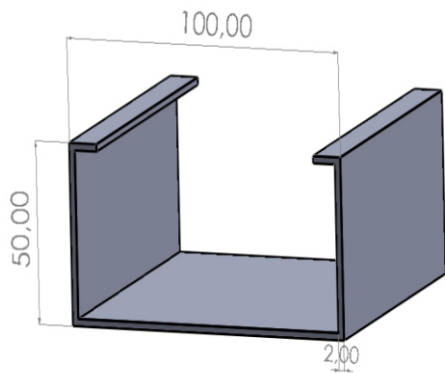
Horizontal Side Profile
80x 80 x 2 mm



Solar Panel Carrier Profiles
100 x 50 x 2mm

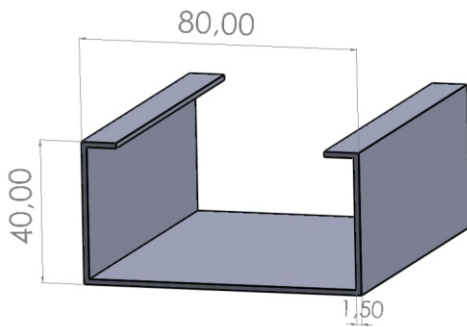


Solar Panel
Carrier & Connections Profiles
90 x 30 x Sigma PRF

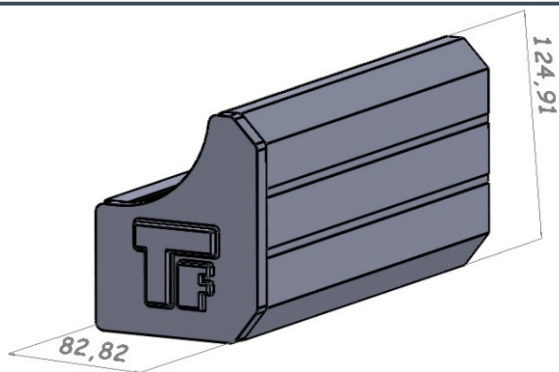


TF.LINE or SOLAR CARPORT

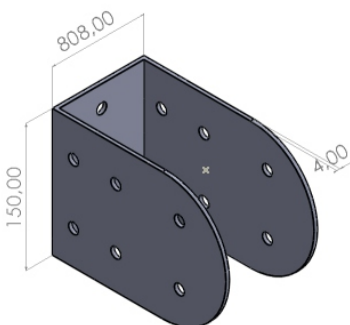
PV Water Evacuations Channels
100 x 50 x 2 mm



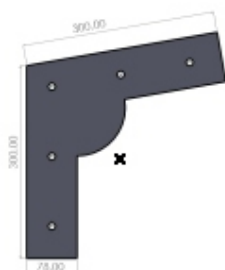
PV Water Evacuations Channels
80 x 40 x 2 mm



Rain Gutter Profile
&
Cover Cup Aluminium
125x 83 x 2,5mm

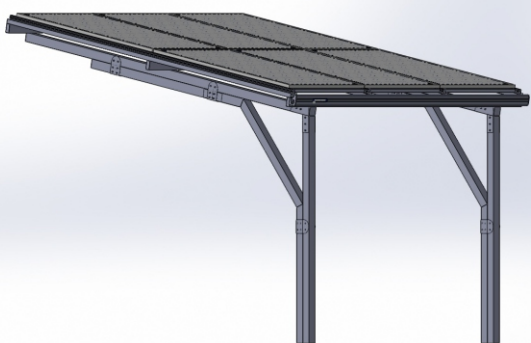


Connections Flanges
150x80x 4 mm

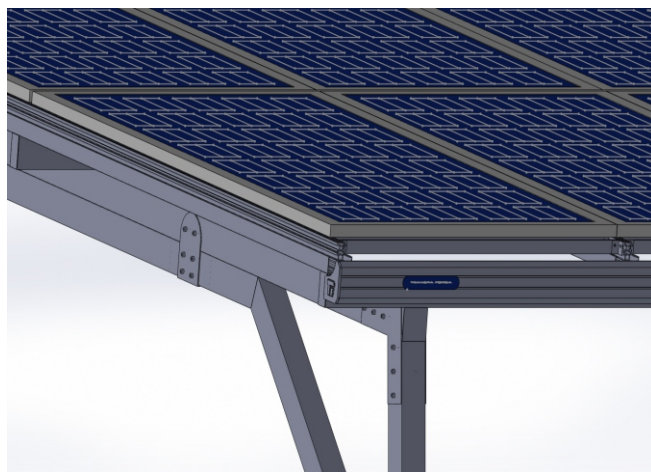


Connections Flanges
300x300x4 mm

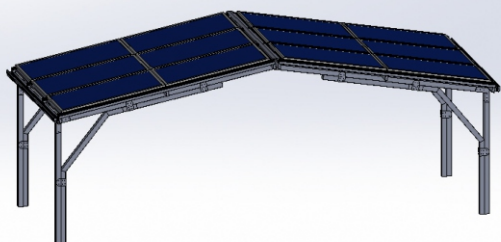
TF LINE SOLAR CARPORT DIFFERENT CONNECTIONS



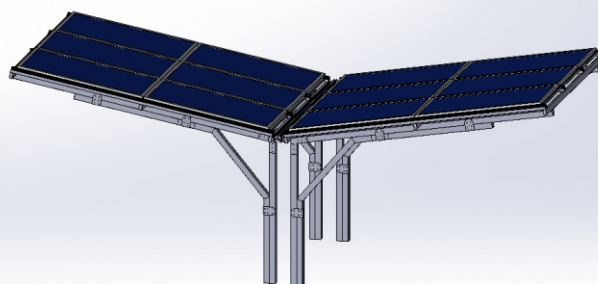
SINGLE PORT



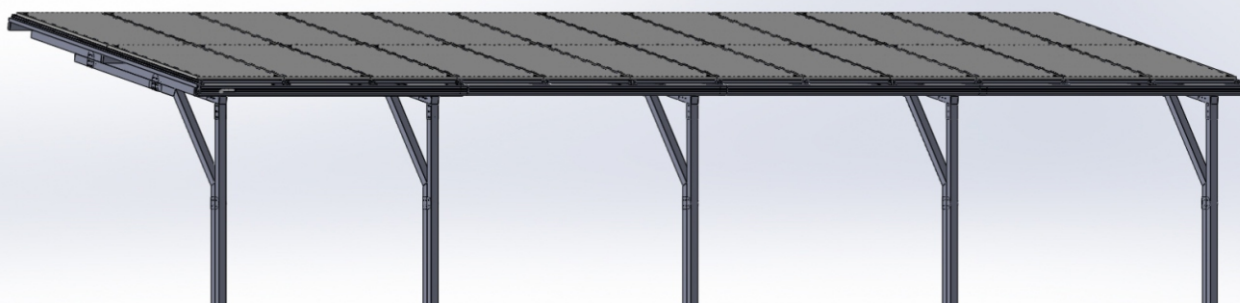
RAIN GUTTER DETAIL



M JOINT CONNECTION



Y JOINT CONNECTION



I JOINT CONNECTION