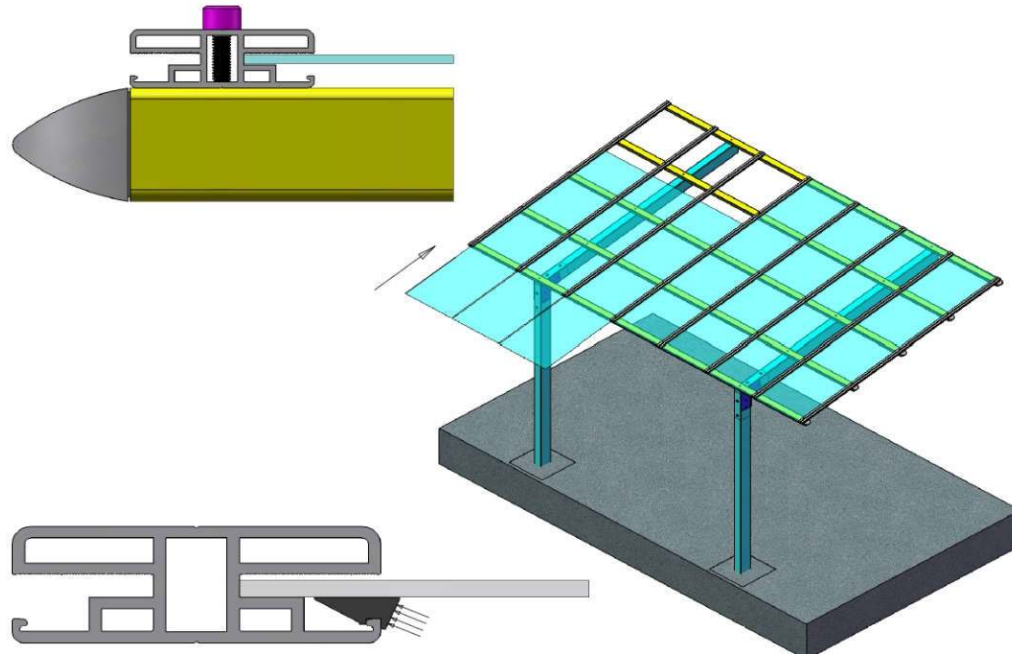


## 7 - Assembly of roof sheets

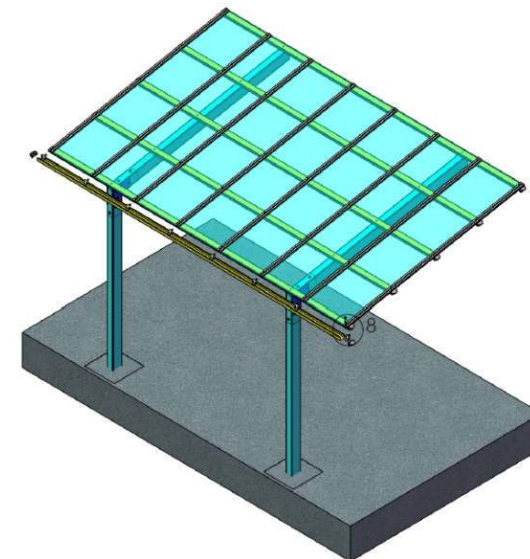
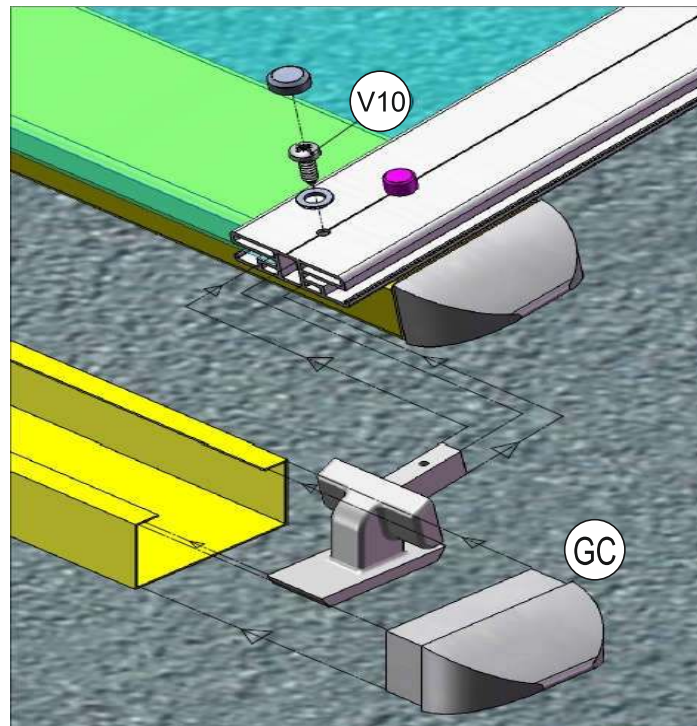


TRANSPAFORZA®

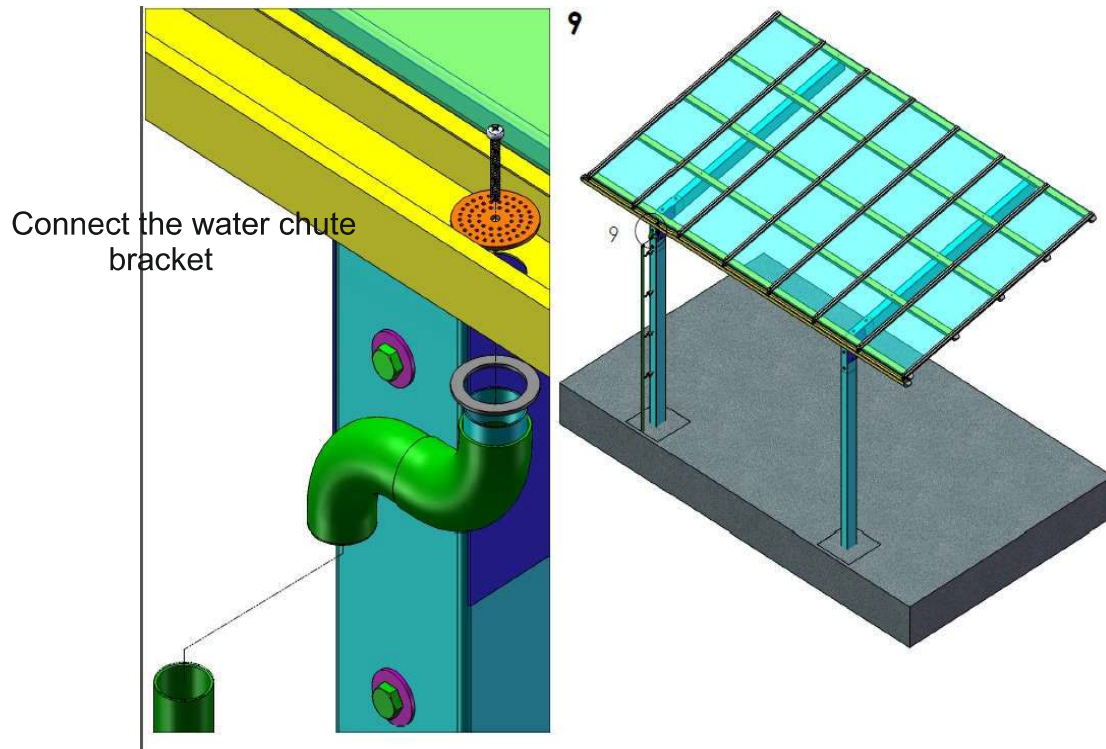
## 8 - Installation of Rain Gutter

Place and slide the roof sheets ,  
Compress the rubber seal and stabilize  
the roof sheets from under side .

Drive the rain gutter profile to the gutter support  
After the installations of rain gutter, silicone the end  
cap of gutter (GC)

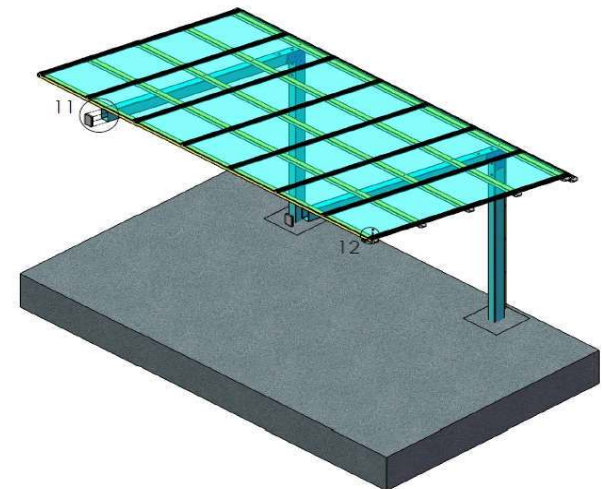
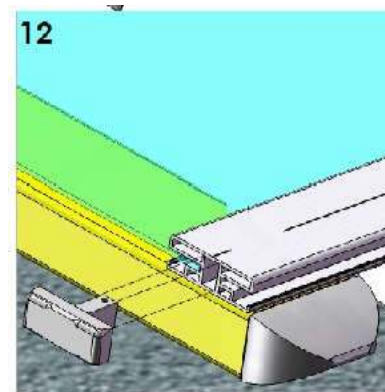
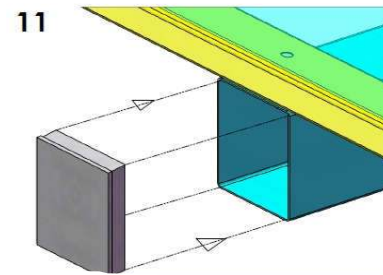
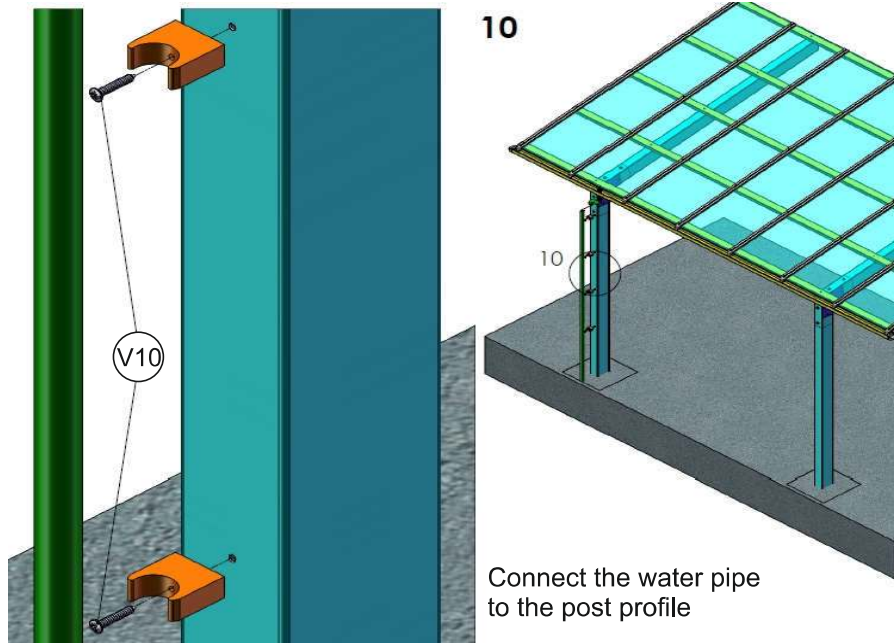


## 9- Water chute connection



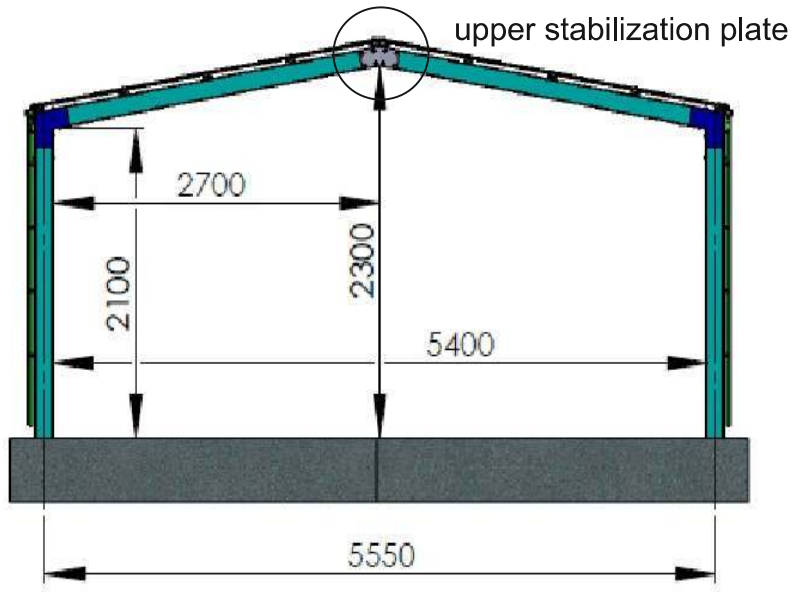
TRANSPAFORZA®

## 10 - Installations of end cup covers

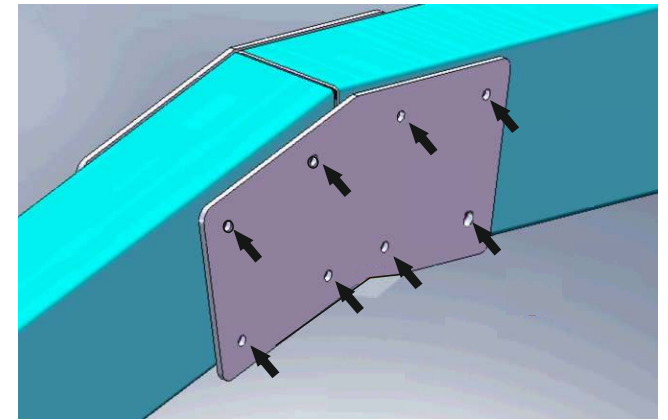
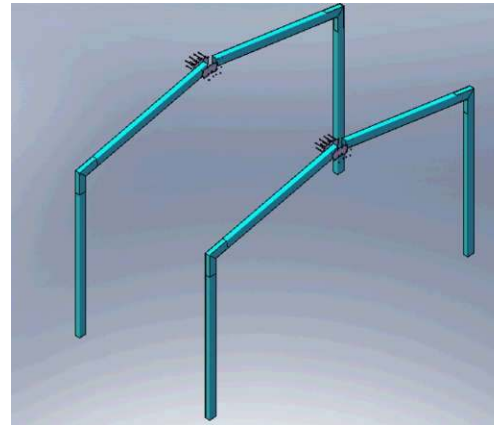




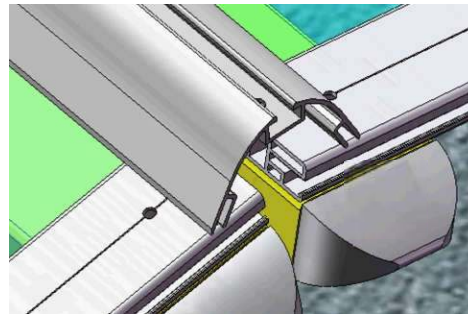
# CONNECTION OF M JOINT



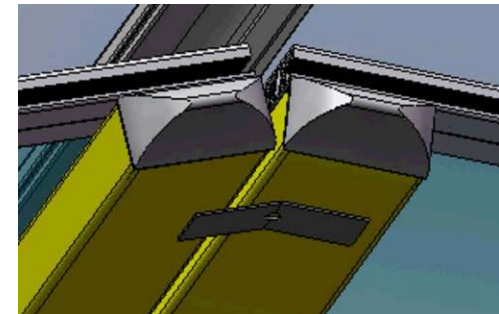
M Joint is formed by two single combinations



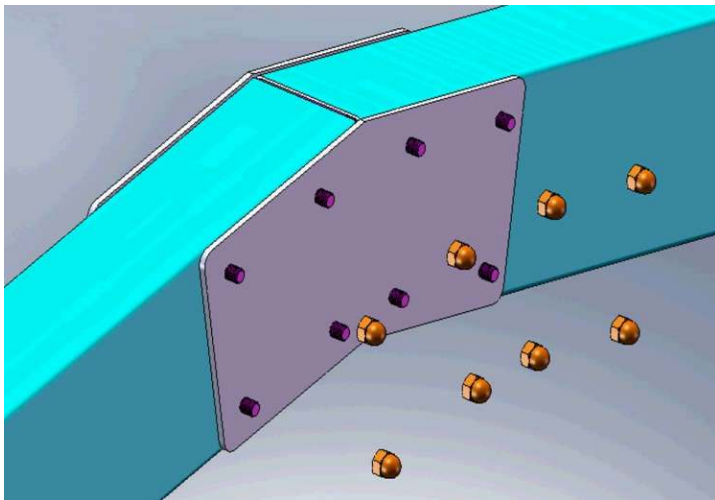
After the correct installation of carports, place the upper stabilization plate and drill with a drill bit of 9 mm from both side.



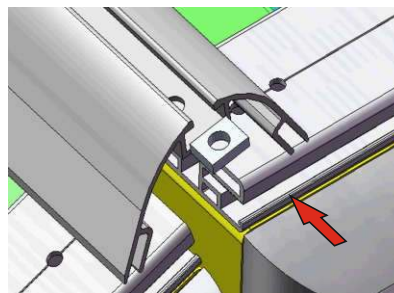
Place the rain cover profile between the carports



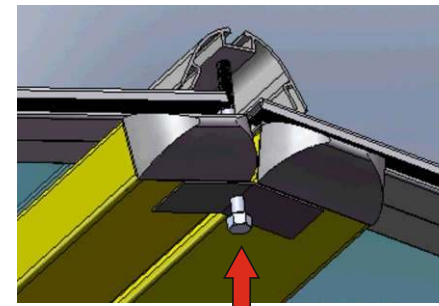
Place the rain cover profile holder between the profiles from bottom side



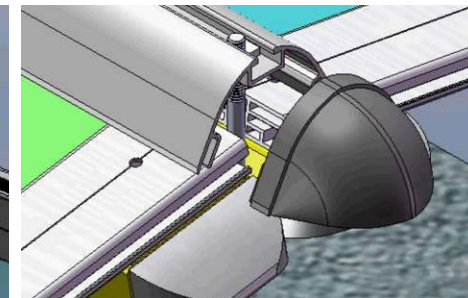
Place the screws to the holes and tighten the nut from both side



Slide the nut on the gap to profile



Place the screw and tighten



Close the edge of profile with the plastic cup