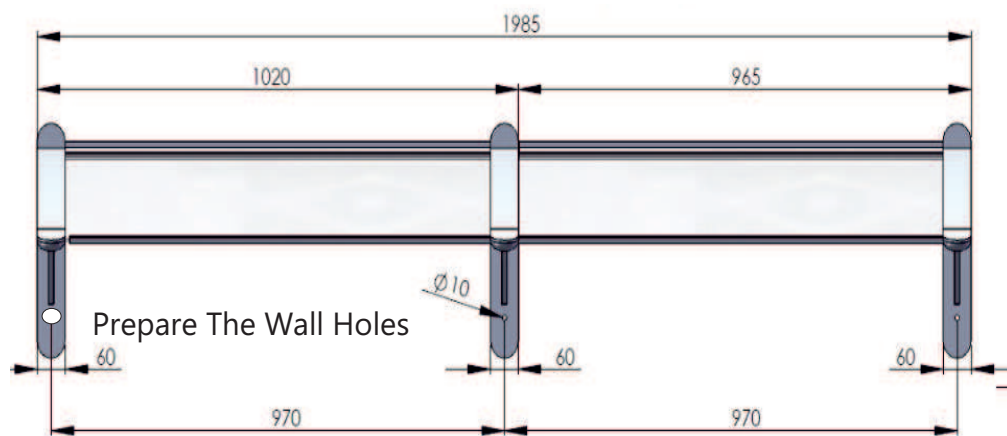
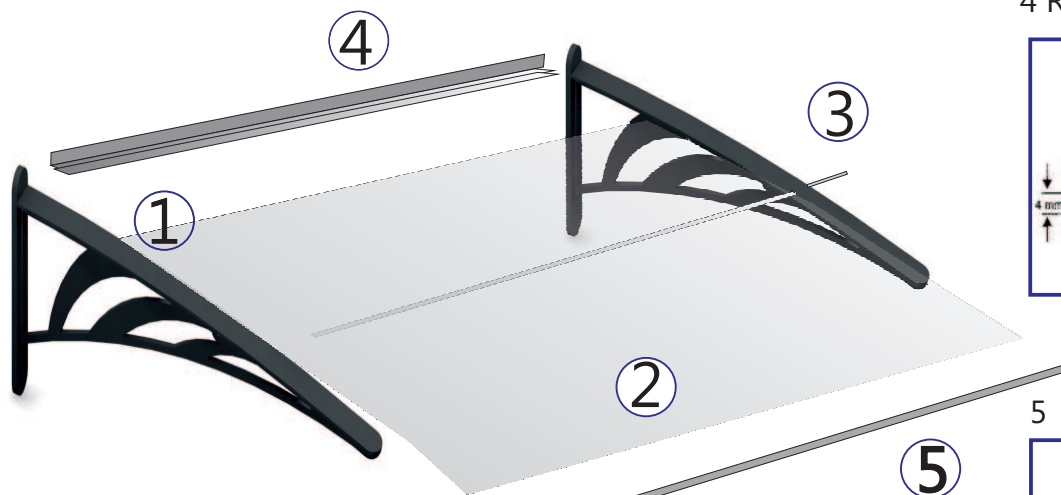
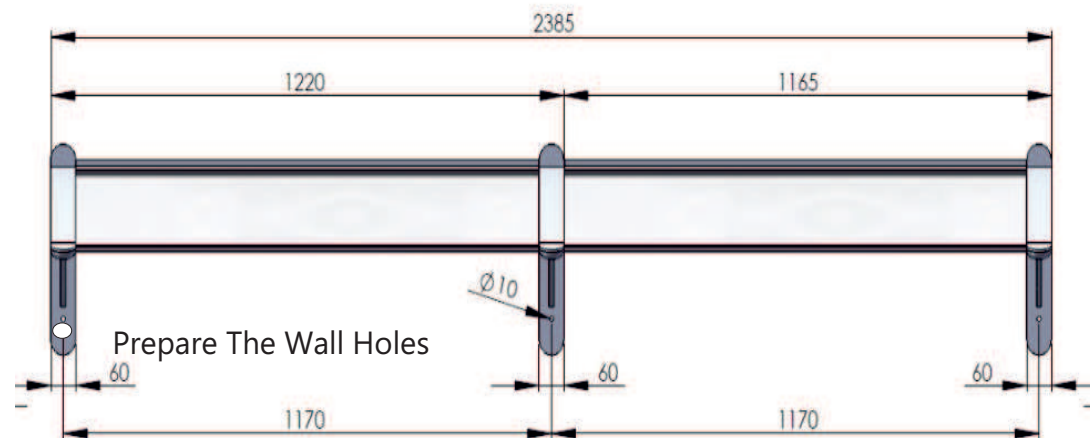


## TF STANDARD 100x100

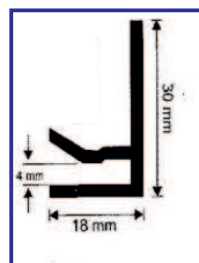


## TF STANDARD INSTALLATION

## TF STANDARD 100x120



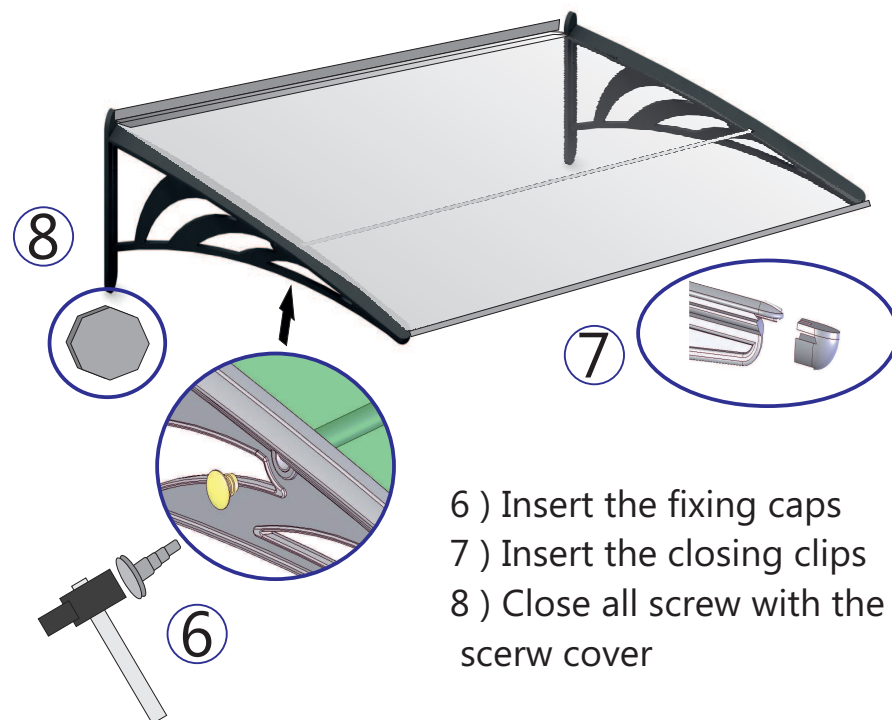
4 Rear Profile



5 Front Profile



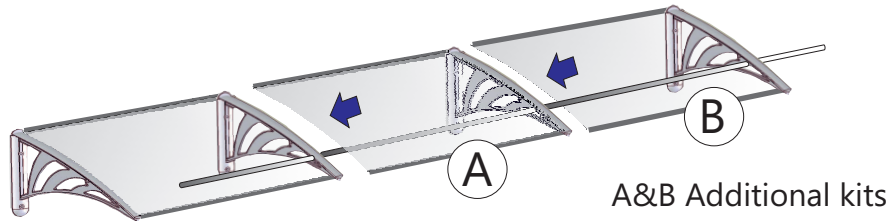
3 Support Tube



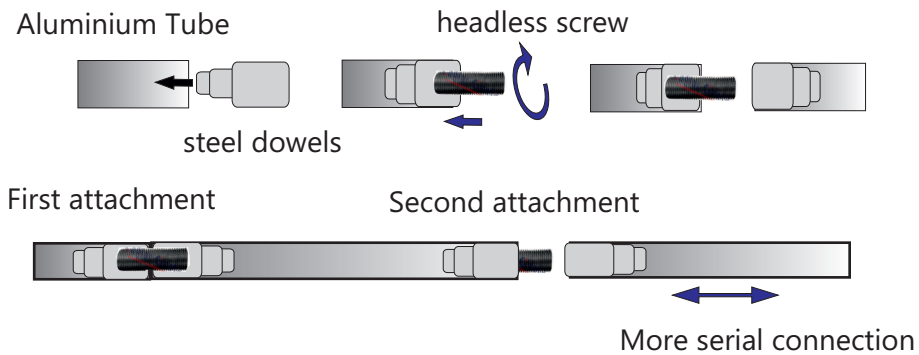
- 1) Silicone the arm bearings
- 2) Slide the roof panel
- 3) Place through the hole the support tube
- 4) Silicone between the wall and the rear profile
- 5) Place the front profile with a thin layer of silicone

- 6) Insert the fixing caps
- 7) Insert the closing clips
- 8) Close all screw with the screw cover

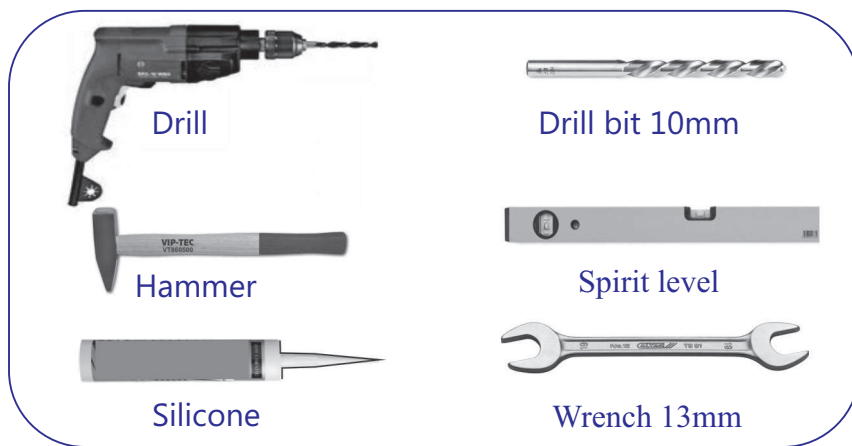
## Serial Connections Of TF Standard



### Connection of aluminum support tube



### Required Tools



**TRANSPAFORZA<sup>®</sup>**  
*Canopies*



**TF STANDARD**

**Single & Serial Applications**